

CERTIFICATE OF ANALYSIS

(Certificate No. KMD011027-01)

Release Date: 07/06/2025

Re-test Date: 06/06/2028

N-methyl-2-(2-nitrophenyl)ethan-1-amine hydrochloride

Identification

Chemical Name :

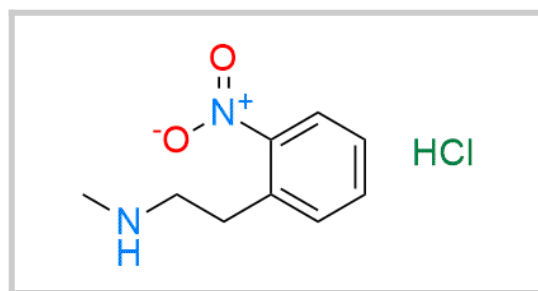
N-methyl-2-(2-nitrophenyl)ethan-1-amine hydrochloride

CAT No. : KMD011027

CAS No. : 1803592-87-1

Molecular Formula : C₉H₁₂N₂O₂ : HCl

Molecular Weight : 180.20 : 36.5



Analytical Information

Batch No. : D011027-102-063

Description : Brown Solid

HPLC Purity : 99.04 %

Weight Loss By TGA : 0.50 %

% Potency : 98.54 %

Solubility : Methanol

Mass : Confirm

IR : Confirm

¹H NMR : Confirm

Additional Information

Long Term Storage : Store at 2-8 deg. C for long term storage

Shipping Condition : Product is stable to be Shipped at Room Temperature

% Potency = [100 - 0.50(Weight Loss By TGA)] x [99.04(HPLC Purity)]/100 = 98.54 %

Recommendation : Released

	Department	Name	Signature	Date
Prepared By	Analytical	Jignesh Patel		07/06/2025
Reviewed & Approved By	Quality Control	Jatin Patel		07/06/2025

Attachments : COA, HPLC, MASS, ¹HNMR, IR and TGA