

# **CERTIFICATE OF ANALYSIS**

(Certificate No. KMD014023-01)

**Release Date:** 07/01/2026

**Re-test Date:** 06/01/2029

## **DULOXETINE RELATED COMPOUND F**

### **Identification**

**Chemical Name :**

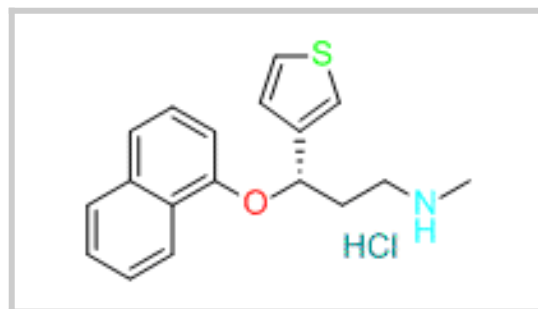
(S)-N-methyl-3-(naphthalen-1-yloxy)-3-(thiophen-3-yl)propan-1-amine hydrochloride

**CAT No.** : KMD014023

**CAS No.** : 2748376-86-3

**Molecular Formula** : C<sub>18</sub>H<sub>19</sub>NOS : HCl

**Molecular Weight** : 297.4 : 36.5



### **Analytical Information**

**Batch No.** : D014023-114-088

**Description** : Off Brown Hygroscopic Solid

**HPLC Purity** : 93.33 %

**Weight Loss By TGA** : 1.21 %

**% Potency** : 92.2 %

**Solubility** : Acetonitrile

**Mass** : Confirm

**IR** : Confirm

**<sup>1</sup>H NMR** : Confirm

### **Additional Information**

**Long Term Storage** : Store at 2-8 deg. C for long term storage

**Shipping Condition** : Product is stable to be Shipped at Room Temperature

**% Potency** = [100 - 1.21(Weight Loss By TGA)] x [93.33(HPLC Purity)]/100 = 92.2 %

**Recommendation** : Released

	Department	Name	Signature	Date
Prepared By	Analytical	Jignesh Patel		08/01/2026
Reviewed & Approved By	Quality Control	Jatin Patel		08/01/2026

**Attachments** : COA, HPLC, MASS, <sup>1</sup>HNMR,IR and TGA